

DX[®]

***OUR MID-SIZED FABRICATOR:
ALL THE FUNCTIONS YOU NEED,
AT A FRACTION OF THE PRICE***



MADE IN

THE USA

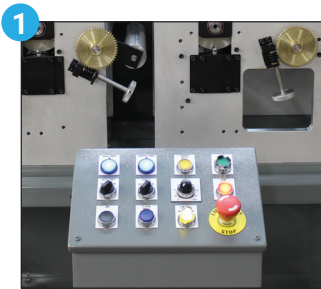
Rotary Fabrication
Machinery & Accessories

PACE CONVERTING
EQUIPMENT



THE PERFECT MID-SIZED FABRICATOR WITH ALL THE FUNCTIONS YOU NEED, AND EXPECT, FROM PACE.

The PACE DX uses our rugged construction. Built for strength and designed for durability, our entry-level price point will make you think twice about the hassle of buying or refurbishing used machinery.



- 1 Easy to use, compact machine controls
- 2 Light curtains for operator safety
- 3 Operator friendly, simple pneumatic controls

Technical Specifications

Base Model

- Main unwind with pneumatic mandrel and brake
- 1st module:
 - One anvil head with 101 tooth through-hardened roll
 - Removable for maintenance purposes
 - Anvil has two positions 9 o'clock and 12 o'clock
- 2nd module:
 - Two anvil head with 101 tooth through-hardened rolls
 - Removable for maintenance purposes
- Main rewind:
 - Clockwise rotation with pneumatic mandrel and clutch
 - Can handle 14" OD finished roll
- Overhead laminating unwind with pneumatic mandrel and brake
- Overhead powered waste rewind with pneumatic mandrel and clutch
- 1/8 in CP gearing
- 70 durometer laminating nip
- Run speeds up to 300FPM
- 70 durometer nip/laminating roller
- Pre-determining, programmable counter
- Heavy duty truck assist assembly
- Full set of die hold-down hardware for each anvil station
- Two swing register assemblies
- One razor slitting assembly with six blade holders
- 0.75" thickness machined aluminum side frames
- In-house welded and painted tubular steel subframe
- Light curtain for operator safety
- Air required: 2 to 3 CFM at 80 PSI



Rotary Fabrication
Machinery & Accessories

8500 Lake Avenue • Cleveland, OH, 44102
Phone (216) 631-4555 • Fax (216) 631-4555
PACE-Equipment.com



Options & Accessories

DX Standard

- Automatic web guidance with built in splicing table
- Second, finished rewind with 3" air mandrel
- Rotational reversing of the product rewind mandrel(s) with separate motor and clockwise / counterclockwise switch

DX Expanded

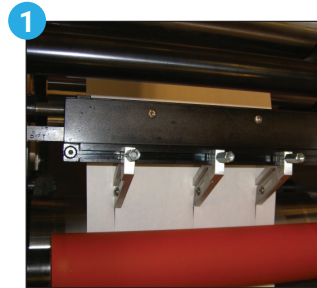
- All DX Standard features
- A fourth anvil is available to be added in the first module, with additional swing register assembly
- Additional weldments available for future installation of unwind / rewinds
- Pneumatic draw nip assembly with roller, gauge, regulator, and up / down switch

DX Premier

- All DX Expanded features
- All four anvils are easily removable by operator
- Removable, driven, through-hardened, support rolls are positioned below the anvils

Also Available

- Additional powered waste rewind assembly, including pneumatic clutch and 3" OD pneumatic mandrel
- Additional powered laminating unwind assembly, including pneumatic brake and 3" OD pneumatic mandrel
- Additional powered unwind / rewind assembly, including combination pneumatic brake / clutch and 3" OD pneumatic mandrel



- 1 Razor Slitter
- 2 Stripe Guide Unit
- 3 Take-off Unit



Rotary Fabrication Machinery & Accessories

8500 Lake Avenue • Cleveland, OH, 44102
Phone (216) 631-4555 • Fax (216) 631-4555
PACE-Equipment.com

The **PACE** Advantage

PACE has been known as the work-horse brand of the converting industry since 1983. Our rugged construction and customizable machine platform provides the versatility that adds value for our customers. Automotive, aerospace, and medical manufacturers have turned to us with their toughest parts and TRUST PACE, the industry leader for over 30 years.

Rugged Construction

PACE converting machines are built for strength and designed for durability. We use heavy-gauge aluminum plate, stainless steel, thick wall structural tubing, and other top quality materials and components. Our ruggedized construction minimizes maintenance and associated costs over the lifetime of the machine.

Versatility and Flexibility

Our base model machines can process the simplest jobs, or your most complex challenges – our products are built to deliver with precision and performance. All PACE machines are highly configurable, with various options and accessories available to match your specific needs.

Value

PACE machines deliver an ROI unmatched in the converting industry. Our machines are capable of reliable performance for years with an absolute minimum amount of maintenance. With affordable pricing and the fastest payback in the industry, it's no wonder most of our customers own more than one PACE machine.

	Width	Laminate	Diecut	Perforate	Sheet	Removable Anvils	Die Stations	Auto Tension	Auto Web Guide	Auto Registration	Gap Separation	Drive System	Max Speed
Patriot	7"	Yes	Yes	Yes	Yes	No	3	No	No	No	No	Timing Belt	200
DX Basic	10"	Yes	Yes	Yes	Yes	No	3	Available	Available	No	No	Timing Belt	300
DX Expanded	10"	Yes	Yes	Yes	Yes	No	4	Available	Available	No	No	Timing Belt	300
DX Premiere	10"	Yes	Yes	Yes	Yes	Yes	4	Available	Available	No	No	Timing Belt	300
Pacer	7" 10" 12" 13" 14" 16" 18"	Yes	Yes	Yes	Yes	Yes	3-4	Available	Available	Available	Available	Line Drive	300
Big Foot	20"-30"	Yes	Yes	Yes	Yes	Available	3-4	Available	Available	Available	Available	Varies	300
2 Anvil	4"-30"	Yes	Yes	Yes	Yes	Available	2	Available	Available	No	No	Timing Belt	300
Custom	4"-30"	Yes	Yes	Yes	Yes	Available	Varies	Available	Available	Available	Available	Varies	Varies

USA Sales

For states not listed
sales@pace-equipment.com
(216) 631-4555

Northeast Sales

KY, VA, WV, MD, DE, NJ, CT, RI, ME, NH, VT,
MA & Southern parts of OH, PA, NY & IN
Richard Jefferys
rjeff@pace-equipment.com
(513) 300-3718

Western Sales

WA, OR, CA, ID, NV, UT, NM, WY,
CO, ND, SD, MN, IA, WI
Chris Wiedman
chrisw@pace-equipment.com
(719) 547-1221

Southeast Sales

NC, SC, GA, FL, AL, MS, TN
Steve Anderson
stevea@pace-equipment.com
(803) 213-1099

International Sales

Please contact PACE headquarters
sales@pace-equipment.com
(216) 631-4555

Technical Service

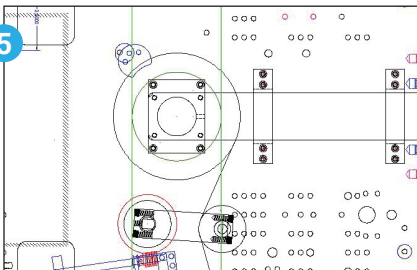
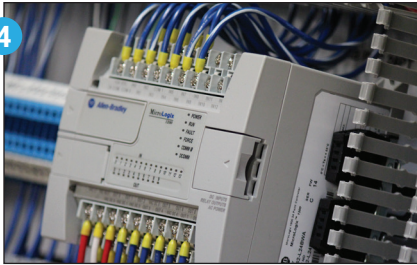
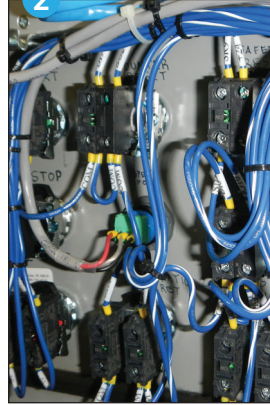
Nick Filippelli
support@pace-equipment.com
(216) 631-4555



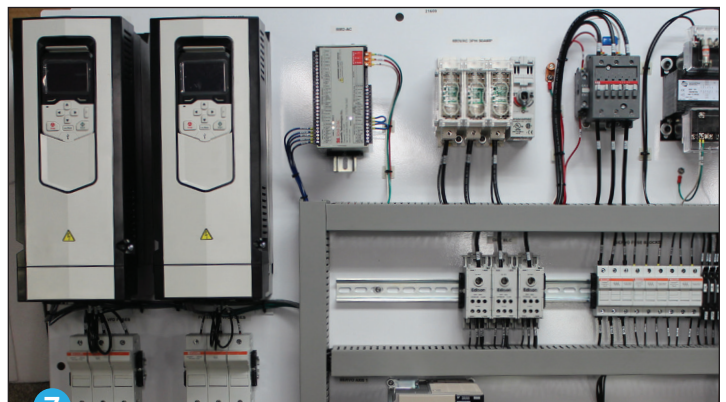
Rotary Fabrication
Machinery & Accessories

8500 Lake Avenue • Cleveland, OH, 44102
Phone (216) 631-4555 • Fax (216) 631-4555
PACE-Equipment.com

Highest Quality **COMPONENTS**



- 1 In-house fabrication and heavy-duty construction
- 2 In-house wiring design and implementation
- 3 VFD AC drive available
- 4 Fully programmable PLC controllers
- 5 Precision engineered to exacting specifications
- 6 Easy to use controls
- 7 Control panels designed to high standards



Rotary Fabrication
Machinery & Accessories

PACE CONVERTING
EQUIPMENT

8500 Lake Avenue • Cleveland, OH, 44102
Phone (216) 631-4555 • Fax (216) 631-4555
PACE-Equipment.com