



**THE WORKHORSE OF OUR LINE
ADAPTABLE, FLEXIBLE, DURABLE**

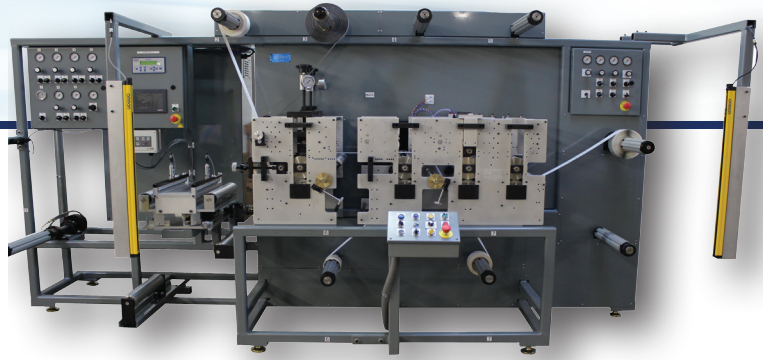


**Rotary Fabrication
Machinery & Accessories**



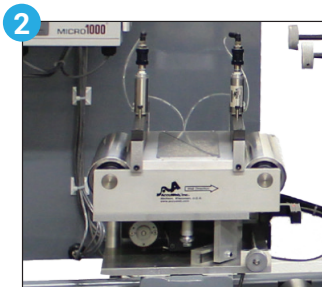
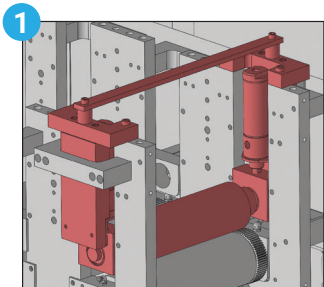
THE WORKHORSE OF OUR CONVERTING MACHINE LINEUP. ADAPTABLE, DEPENDABLE, DURABLE, IMPRESSIVE.

The adaptable PACER. Large, removable anvils make it perfect for zero-tension laminating projects, island placement projects, or other fabricating challenges. Optional accessories and features broaden the range of converting functionality.



Technical Specifications

- Main unwind with pneumatic mandrel and brake; max capacity of 40" OD and 200 lbs
- Main module:
 - Three anvil head with 119 tooth through-hardened rolls
 - Easy-to-remove anvils with heavy-duty driven support rolls
 - Final die station with 360-degree planetary registration and advance / retard switch
- Dual, reversible rewinds with pneumatic mandrel and clutch
 - Electronic & switch controlled
 - Mandrel capacity: 21" OD, 200 lb finished roll
- Pneumatic draw nip assembly, with roller, gauge, regulator and up / down switch
- Four overhead, powered rewind / unwind assemblies with 3" OD air mandrel & combination pneumatic brakes / clutches
- Two underneath, powered rewind / unwind assemblies with 3" OD air mandrel & combination pneumatic brakes / clutches
- 1/8 in CP gearing; AGM #10 gears on anvils and support rolls
- 70 durometer laminating nip
- 0 - 300 FPM
- Pre-determining, programmable counter
- Heavy duty truck assist assembly
- Full set of die hold-down hardware for each anvil station
- Three swing register assemblies
- One razor slitting assembly with six blade holders
- 1" thickness machined aluminum side frames
- In-house welded and painted tubular steel subframe
- Light curtain for operator safety
- Air required: 2 to 3 CFM at 80 PSI

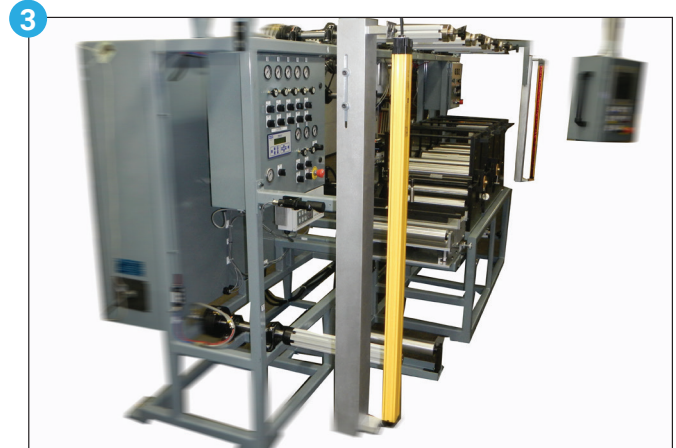
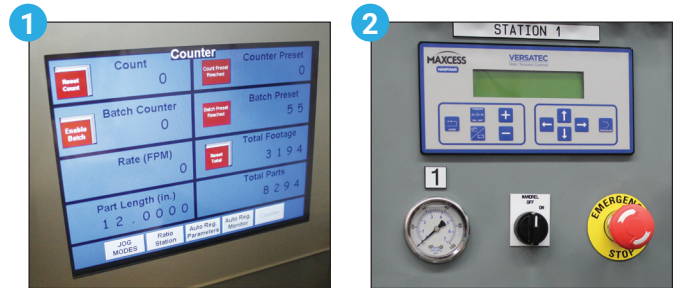


- 1 Pneumatic Pressure Nip
- 2 Built-in Pneumatic Splice Table
- 3 Four Overhead Unwinds



Options & Accessories

- Optional 1st module:
 - One anvil head with 119 tooth through hardened roll
 - Easily removable anvil with heavy-duty driven support roll
 - Removable for maintenance purposes
 - Anvil has two positions 9 o'clock and 12 o'clock
 - Optional servo controlled to operate anvil at a different speed ratio to machine basic line speed
- Automatic web guidance with built in splicing table
- Crush cut knife assembly
- Stripper bar assembly for ratio ability
- Sheeted product shingling conveyor with separate speed control
- Additional rewind and unwind mandrels available
- Stripe guide assembly
- Arm, bracket, 1" shaft, 2 flanged core holders
- Die channel extender kit
- Twin Hydra Jack die pressure gauges
- Additional truck assist
- L-Bracket idler
- Anvil scraper assembly with blade and holder bar
- Replacement nip/laminating rollers
- Die hold-down hardware
- Spare die blocks
- Die blocks, twist style for operator side
- Auto ratio for gap separation island placement with HMI
- Auto registration with sensors and hardware controls that adjust the rotational position of one or two downstream dies with HMI



- 1 HMI touch screen for operator friendly use
- 2 Automatic tension controls
- 3 Safety light curtain



The **PACE** Advantage

PACE has been known as the work-horse brand of the converting industry since 1983. Our rugged construction and customizable machine platform provides the versatility that adds value for our customers. Automotive, aerospace, and medical manufacturers have turned to us with their toughest parts and TRUST PACE, the industry leader for over 30 years.

Rugged Construction

PACE converting machines are built for strength and designed for durability. We use heavy-gauge aluminum plate, stainless steel, thick wall structural tubing, and other top quality materials and components. Our ruggedized construction minimizes maintenance and associated costs over the lifetime of the machine.

Versatility and Flexibility

Our base model machines can process the simplest jobs, or your most complex challenges – our products are built to deliver with precision and performance. All PACE machines are highly configurable, with various options and accessories available to match your specific needs.

Value

PACE machines deliver an ROI unmatched in the converting industry. Our machines are capable of reliable performance for years with an absolute minimum amount of maintenance. With affordable pricing and the fastest payback in the industry, it's no wonder most of our customers own more than one PACE machine.

	Width	Laminate	Diecut	Perforate	Sheet	Removable Anvils	Die Stations	Auto Tension	Auto Web Guide	Auto Registration	Gap Separation	Drive System	Max Speed
Patriot	7"	Yes	Yes	Yes	Yes	No	3	No	No	No	No	Timing Belt	200
DX Basic	10"	Yes	Yes	Yes	Yes	No	3	Available	Available	No	No	Timing Belt	300
DX Expanded	10"	Yes	Yes	Yes	Yes	No	4	Available	Available	No	No	Timing Belt	300
DX Premiere	10"	Yes	Yes	Yes	Yes	Yes	4	Available	Available	No	No	Timing Belt	300
Pacer	7" 10" 12" 13" 14" 16" 18"	Yes	Yes	Yes	Yes	Yes	3-4	Available	Available	Available	Available	Line Drive	300
Big Foot	20"-30"	Yes	Yes	Yes	Yes	Available	3-4	Available	Available	Available	Available	Varies	300
2 Anvil	4"-30"	Yes	Yes	Yes	Yes	Available	2	Available	Available	No	No	Timing Belt	300
Custom	4"-30"	Yes	Yes	Yes	Yes	Available	Varies	Available	Available	Available	Available	Varies	Varies

USA Sales

For states not listed
sales@pace-equipment.com
(216) 631-4555

Northeast Sales

KY, VA, WV, MD, DE, NJ, CT, RI, ME, NH, VT,
MA & Southern parts of OH, PA, NY & IN
Richard Jefferys
rjeff@pace-equipment.com
(513) 300-3718

Western Sales

WA, OR, CA, ID, NV, UT, NM, WY,
CO, ND, SD, MN, IA, WI
Chris Wiedman
chrisw@pace-equipment.com
(719) 547-1221

Southeast Sales

NC, SC, GA, FL, AL, MS, TN
Steve Anderson
stevea@pace-equipment.com
(803) 213-1099

International Sales

Please contact PACE headquarters
sales@pace-equipment.com
(216) 631-4555

Technical Service

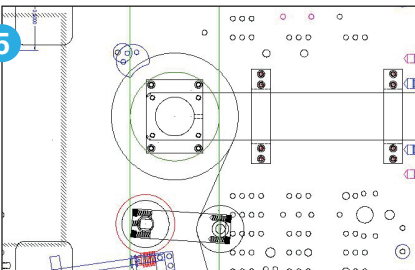
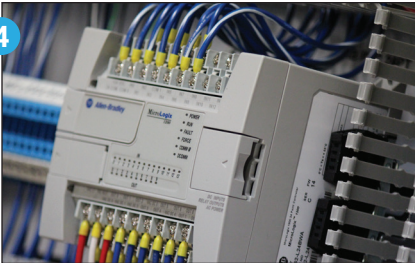
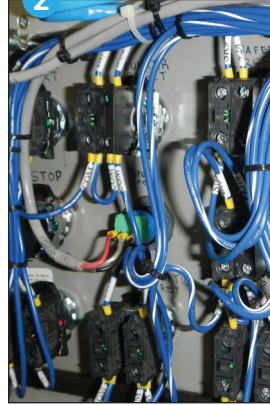
Nick Filippelli
support@pace-equipment.com
(216) 631-4555



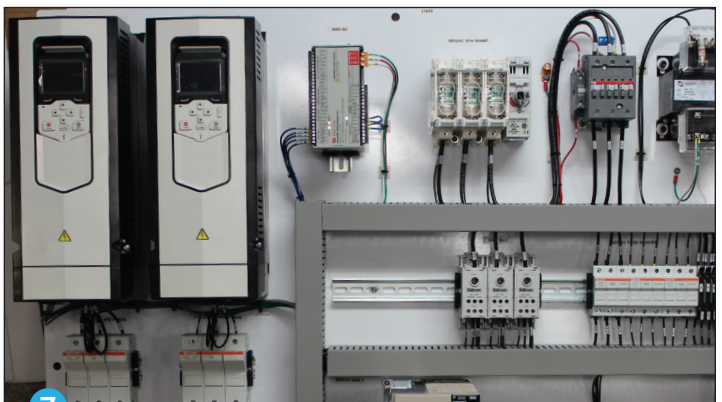
Rotary Fabrication
Machinery & Accessories

8500 Lake Avenue • Cleveland, OH, 44102
Phone (216) 631-4555 • Fax (216) 631-4555
PACE-Equipment.com

Highest Quality **COMPONENTS**



- 1 In-house fabrication and heavy-duty construction
- 2 In-house wiring design and implementation
- 3 VFD AC drive available
- 4 Fully programmable PLC controllers
- 5 Precision engineered to exacting specifications
- 6 Easy to use controls
- 7 Control panels designed to high standards



Rotary Fabrication
Machinery & Accessories



8500 Lake Avenue • Cleveland, OH, 44102
Phone (216) 631-4555 • Fax (216) 631-4555
PACE-Equipment.com