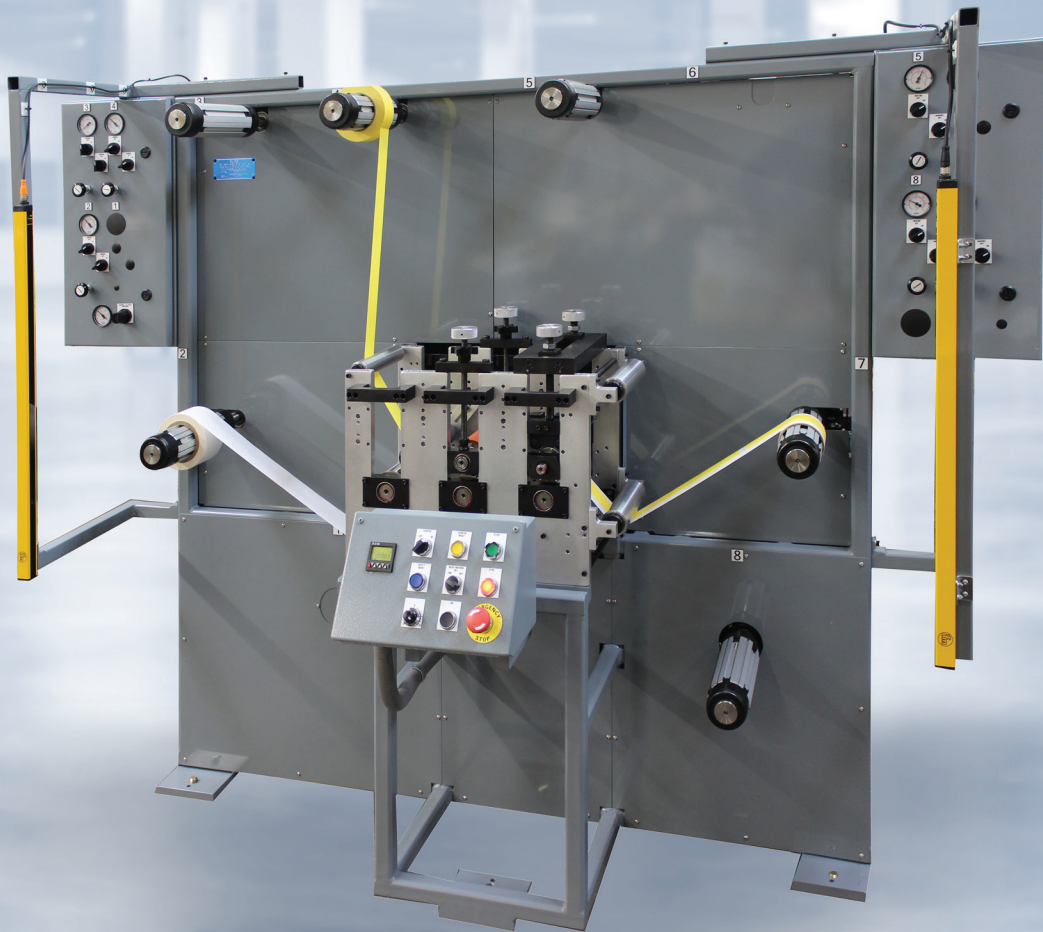


Patriot[®]

**RUGGED CONSTRUCTION
VERSATILE & FLEXIBLE
FASTEST ROI IN THE INDUSTRY**



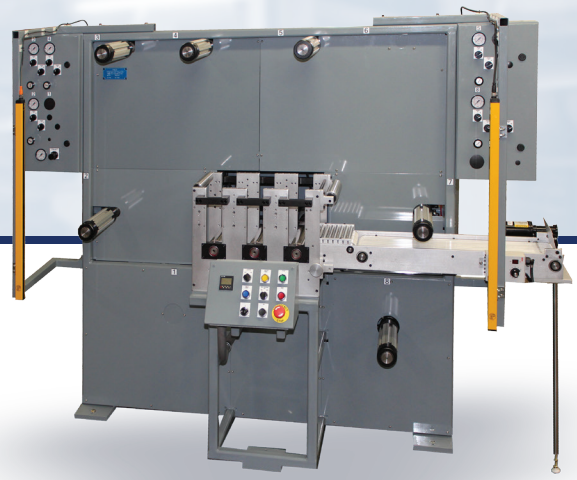
MADE IN

THE USA

Rotary Fabrication
Machinery & Accessories

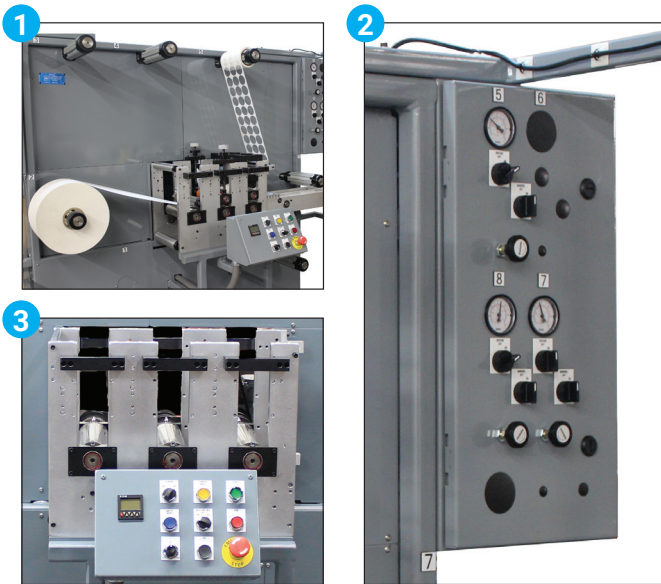
PACE CONVERTING
EQUIPMENT

Patriot®



A COMPLETE FABRICATOR THAT CAN LAMINATE, DIE CUT, SHEET, AND TAB AT AN ECONOMICAL PRICE.

Our 7-inch rotary converter performs all the functions of larger machines. An excellent choice for operators new to rotary fabrication, or experienced converters wishing to add capacity. The Patriot is operator-friendly, easy to use, and efficiently runs simple to complex jobs.



- 1 Scalable; up to 8 mandrels & optional takeoff / conveyor for complex jobs.
- 2 Operator friendly, simple pneumatic controls.
- 3 Easy to use, compact machine controls.

Technical Specifications

Base model

- Main unwind with pneumatic mandrel and brake
- 3 anvil head with 69 tooth through-hardened rolls
- Capable of 12" repeat; larger repeats available
- Main rewind is rotation reversing, switch controlled, with pneumatic mandrel and clutch
 - Up to 14" OD finished roll capability
- Overhead, laminating unwind with pneumatic mandrel and brake
- Overhead, powered waste rewind with pneumatic mandrel and clutch
- 1/8 in CP gearing
- 70 durometer laminating nip
- Speeds up to 200 FPM
- Pre-determining, programmable counter
- Heavy duty truck assist assembly
- Complete set of die hold-down hardware for all anvil stations
- Side frames: 0.75" thick machined aluminum
- In-house welded and painted tubular steel subframe
- Light curtain for operator safety
- Air required: 2 to 3 CFM at 80 PSI
- Weight: Approximately 1200 lbs
- Footprint: Approximately 67" H x 87" W x 68" D

PACE CONVERTING EQUIPMENT

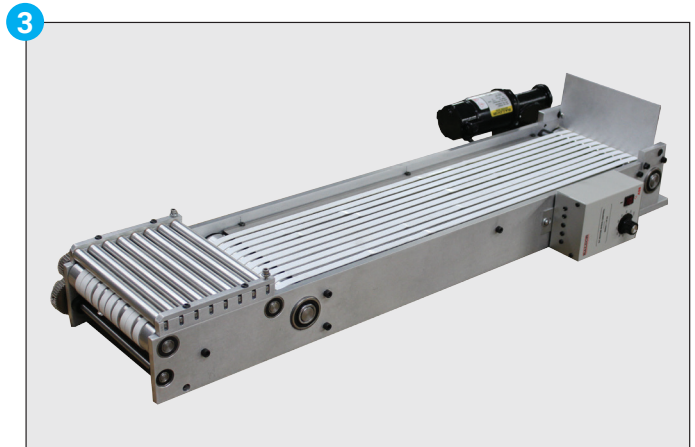
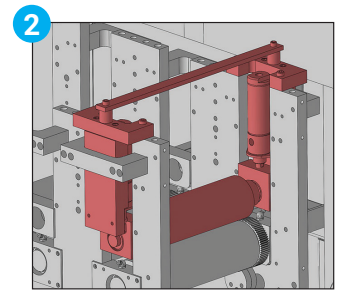
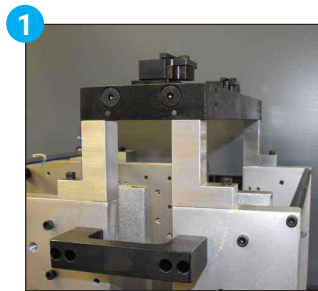
Rotary Fabrication
Machinery & Accessories

8500 Lake Avenue • Cleveland, OH, 44102
Phone (216) 631-4555 • Fax (216) 631-4555
PACE-Equipment.com



Options & Accessories

- Pneumatic **draw nip assembly**, with roller, gauge, regulator and up / down switch
- Sheeted **product shingling conveyor** with separate speed control
- Additional **powered waste rewind** assembly, including pneumatic clutch and 3" OD pneumatic mandrel
- Additional **powered laminating unwind** assembly with pneumatic brake and 3" OD pneumatic mandrel
- Additional **powered unwind / rewind** assembly, including combination pneumatic brake / clutch and 3" OD pneumatic mandrel
- **Stripe guide** assembly
 - Side-to-side screw control bar, 2 collars
- **Lay-on roll assembly**
 - Arm, bracket, 1" shaft, 2 flanged core holders
- **Die channel extender kit** including 2 steel extenders and 4 bolts (2.5" height increase)
- Twin **Hydra Jack** die pressure gauges
- Additional **truck assist**
- **L-Bracket idler**
 - 2" OD polished aluminum with two collars
- **Anvil scraper** assembly with blade and holder bar
- **Replacement nip / laminating rollers**
- **Die hold-down hardware**
 - Knob, threaded rod, bridge, 2 bolts
- **Spare die blocks**
 - With caged needle bearings, 1" ID standard
- **Die blocks, twist-style** for operator side (specify bearing ID)



- 1 Channel Extenders
- 2 Pneumatic Pressure Nip
- 3 Conveyor Attachment



The **PACE** Advantage

PACE has been known as the work-horse brand of the converting industry since 1983. Our rugged construction and customizable machine platform provides the versatility that adds value for our customers. Automotive, aerospace, and medical manufacturers have turned to us with their toughest parts and TRUST PACE, the industry leader for over 30 years.

Rugged Construction

PACE converting machines are built for strength and designed for durability. We use heavy-gauge aluminum plate, stainless steel, thick wall structural tubing, and other top quality materials and components. Our ruggedized construction minimizes maintenance and associated costs over the lifetime of the machine.

Versatility and Flexibility

Our base model machines can process the simplest jobs, or your most complex challenges – our products are built to deliver with precision and performance. All PACE machines are highly configurable, with various options and accessories available to match your specific needs.

Value

PACE machines deliver an ROI unmatched in the converting industry. Our machines are capable of reliable performance for years with an absolute minimum amount of maintenance. With affordable pricing and the fastest payback in the industry, it's no wonder most of our customers own more than one PACE machine.

	Width	Laminate	Diecut	Perforate	Sheet	Removable Anvils	Die Stations	Auto Tension	Auto Web Guide	Auto Registration	Gap Separation	Drive System	Max Speed
Patriot	7"	Yes	Yes	Yes	Yes	No	3	No	No	No	No	Timing Belt	200
DX Basic	10"	Yes	Yes	Yes	Yes	No	3	Available	Available	No	No	Timing Belt	300
DX Expanded	10"	Yes	Yes	Yes	Yes	No	4	Available	Available	No	No	Timing Belt	300
DX Premiere	10"	Yes	Yes	Yes	Yes	Yes	4	Available	Available	No	No	Timing Belt	300
Pacer	7" 10" 12" 13" 14" 16" 18"	Yes	Yes	Yes	Yes	Yes	3-4	Available	Available	Available	Available	Line Drive	300
Big Foot	20"-30"	Yes	Yes	Yes	Yes	Available	3-4	Available	Available	Available	Available	Varies	300
2 Anvil	4"-30"	Yes	Yes	Yes	Yes	Available	2	Available	Available	No	No	Timing Belt	300
Custom	4"-30"	Yes	Yes	Yes	Yes	Available	Varies	Available	Available	Available	Available	Varies	Varies

USA Sales

For states not listed
sales@pace-equipment.com
(216) 631-4555

Northeast Sales

KY, VA, WV, MD, DE, NJ, CT, RI, ME, NH, VT,
MA & Southern parts of OH, PA, NY & IN
Richard Jefferys
rjeff@pace-equipment.com
(513) 300-3718

Western Sales

WA, OR, CA, ID, NV, UT, NM, WY,
CO, ND, SD, MN, IA, WI
Chris Wiedman
chrisw@pace-equipment.com
(719) 547-1221

Southeast Sales

NC, SC, GA, FL, AL, MS, TN
Steve Anderson
stevea@pace-equipment.com
(803) 213-1099

International Sales

Please contact PACE headquarters
sales@pace-equipment.com
(216) 631-4555

Technical Service

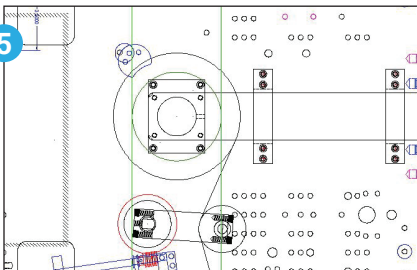
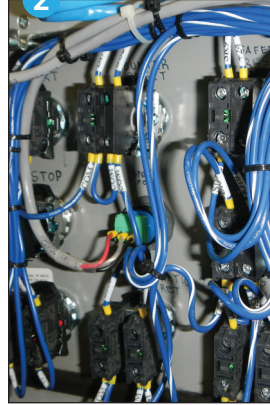
Nick Filippelli
support@pace-equipment.com
(216) 631-4555



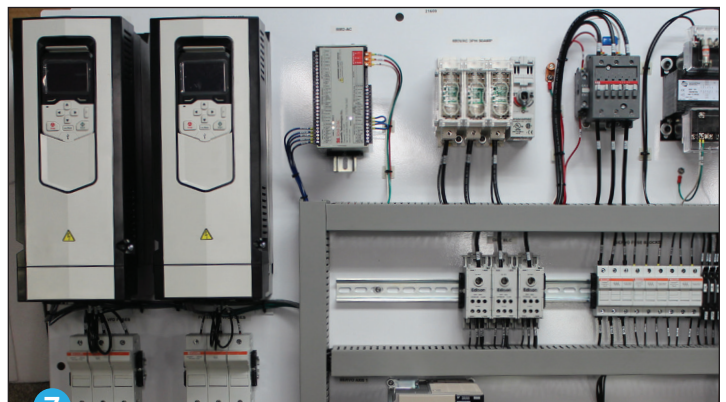
Rotary Fabrication
Machinery & Accessories

8500 Lake Avenue • Cleveland, OH, 44102
Phone (216) 631-4555 • Fax (216) 631-4555
PACE-Equipment.com

Highest Quality **COMPONENTS**



- 1 In-house fabrication and heavy-duty construction
- 2 In-house wiring design and implementation
- 3 VFD AC drive available
- 4 Fully programmable PLC controllers
- 5 Precision engineered to exacting specifications
- 6 Easy to use controls
- 7 Control panels designed to high standards



Rotary Fabrication
Machinery & Accessories



8500 Lake Avenue • Cleveland, OH, 44102
Phone (216) 631-4555 • Fax (216) 631-4555
PACE-Equipment.com